

Staffan Bolminger
Environmental manager



Älvstranden Utveckling AB

Development company owned by the city of Gothenburg

Implement Vision Älvstaden – River City Gothenburg

- Inclusive
- Dynamic
- Green

- Exchange experiences nationally and internationally
- Ambitious environmental and energy strategy



Gothenburg in 1973



Eriksberg 1989



Eriksberg 1992



Eriksberg last week





Kvillebäcken

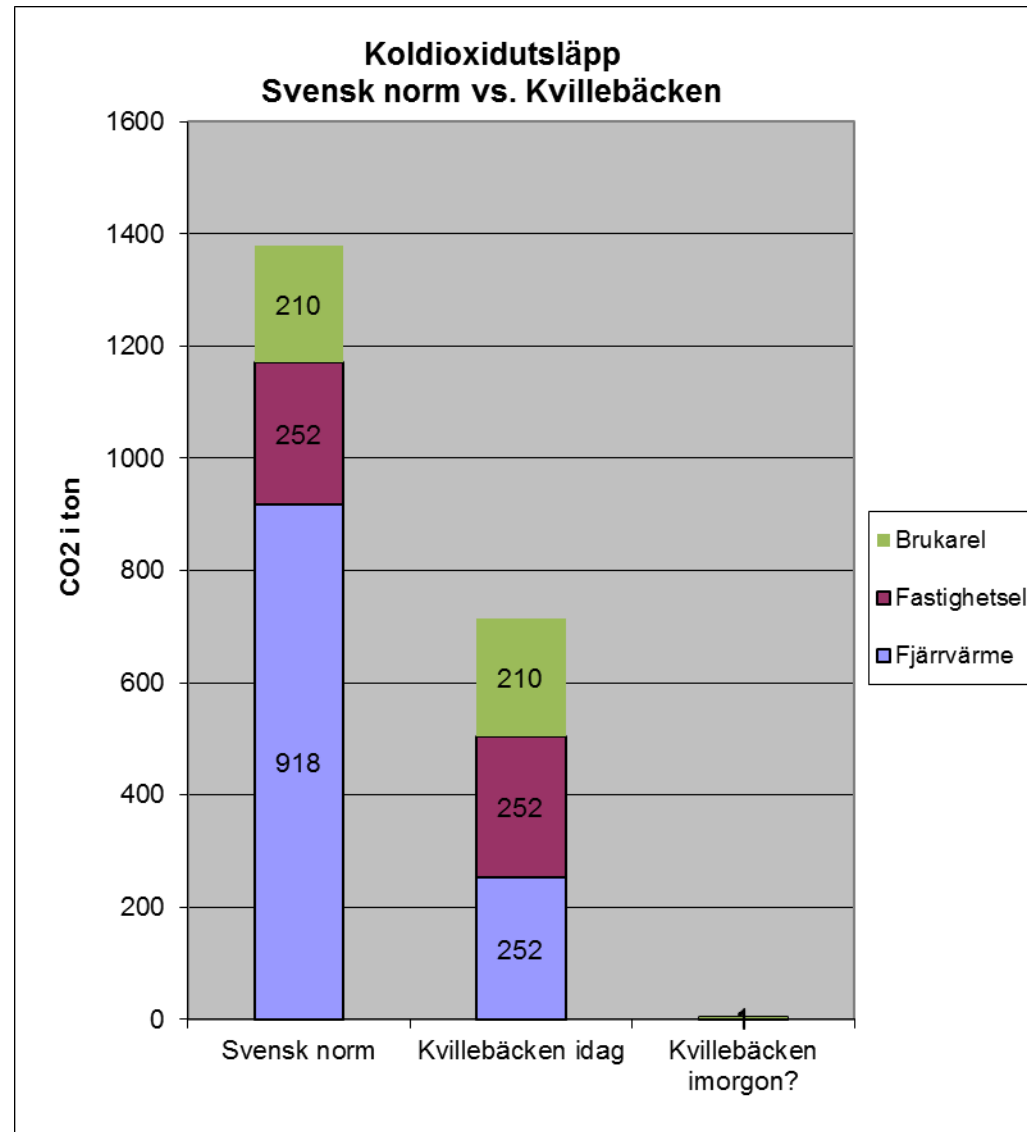


Hamnhuset



CO₂ emissions from 2000 dwellings in Kvillebäcken

1. Swedish standard (90kWh/m², year)
2. Kvillebäcken today (60kWh/m², year)
3. Kvillebäcken tomorrow





Step by step towards energy efficient housing

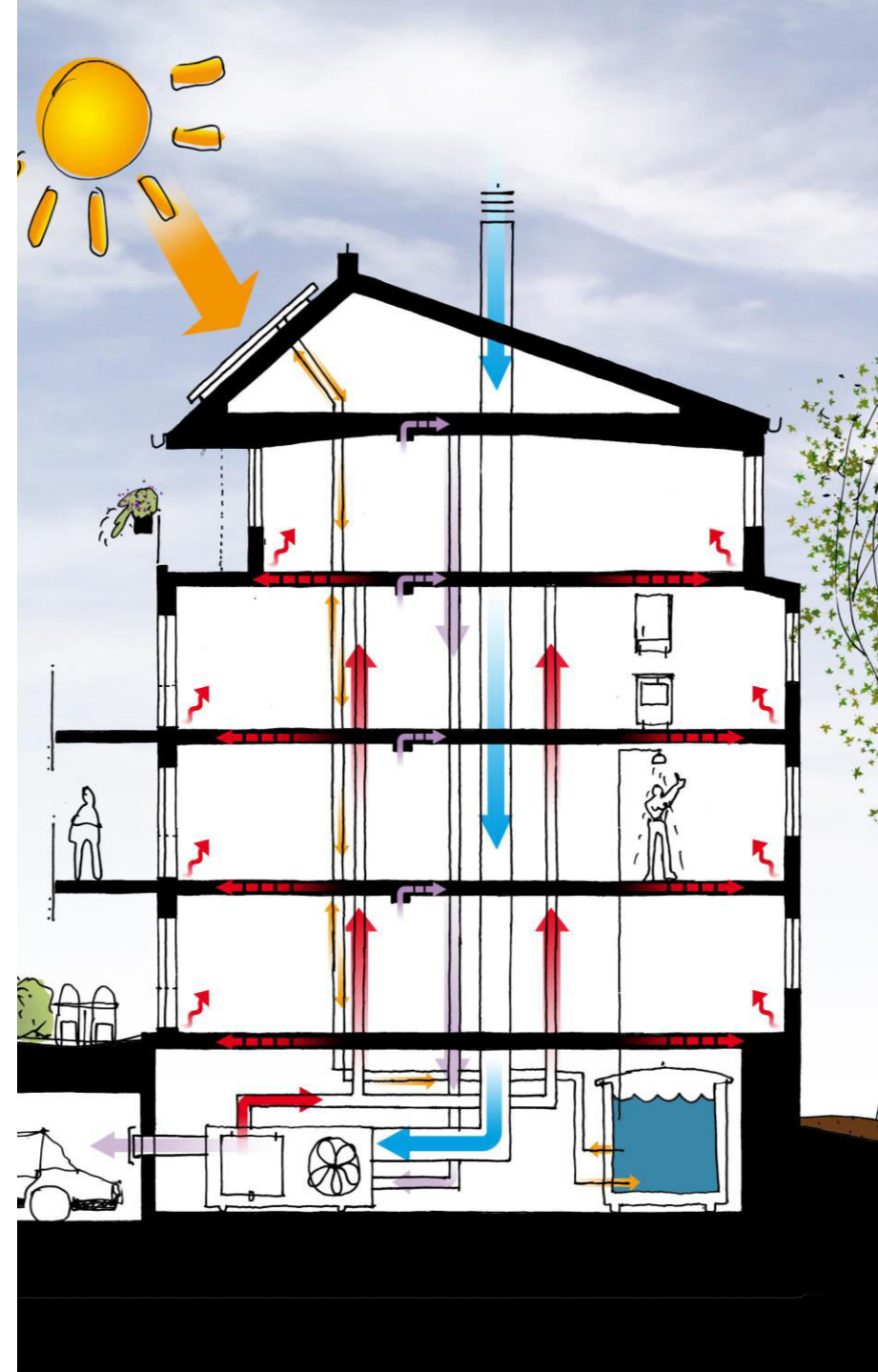


2004 Parkhuset, 109 kWh/m², year
2006 Höghuset, 99 kWh/m², year
2008 Hamnhuset, 59 kWh/m², year

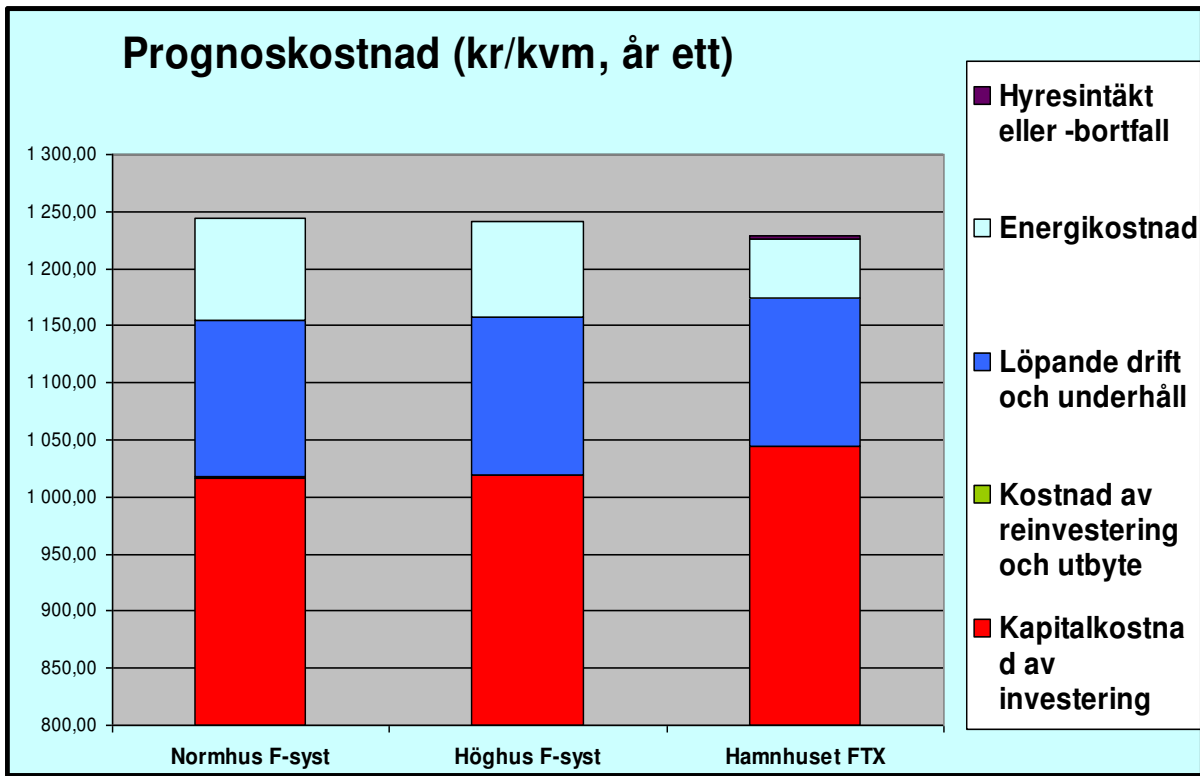


Four conditions

1. Good climate shell
 - Minimize energy losses!
2. Ventilation with recovery
 - Recycle energy!
3. Sun collectors
 - Use renewable energy!
4. Moisture safe
 - Always important – especially when you building energy efficient!



Most important - better profit!



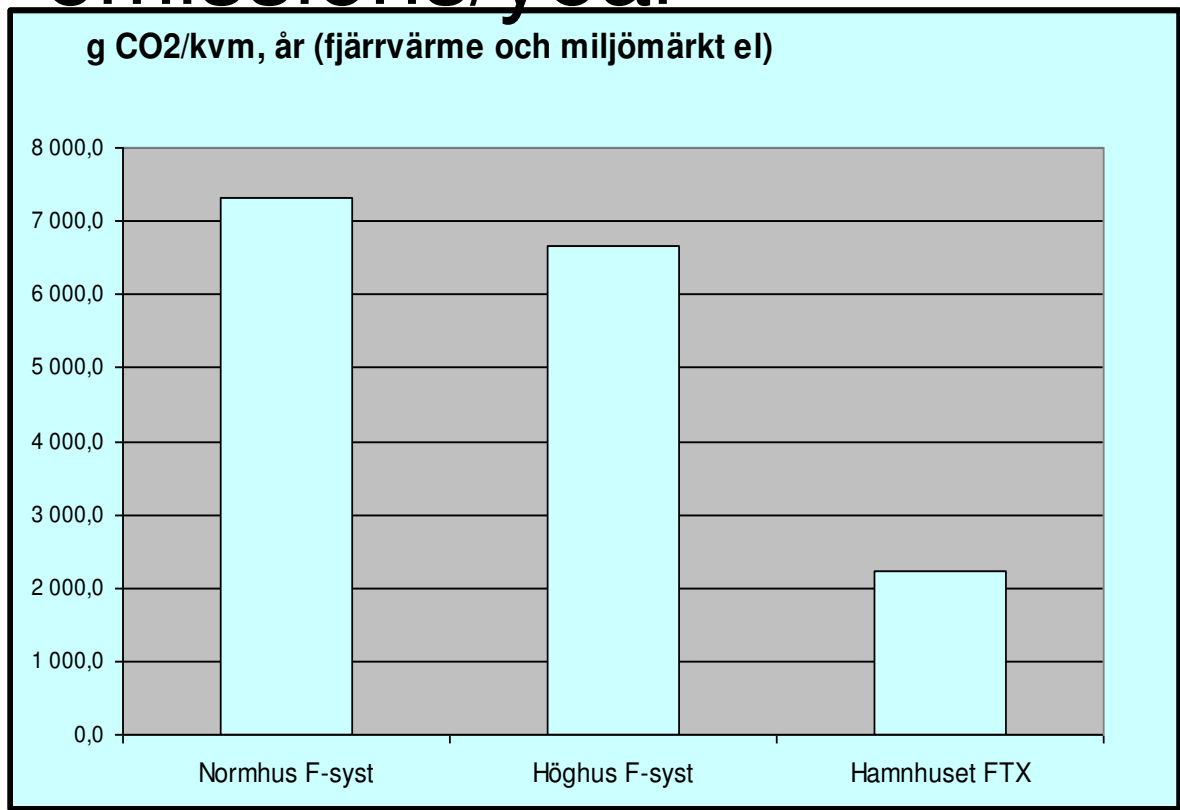
Higher investment gives us higher interest –
but energy costs decreases even more!

Higher investment gives us better profit!

This is the first year and no prediction – we know energy prices and interest costs



60tons lower carbon dioxide emissions/year



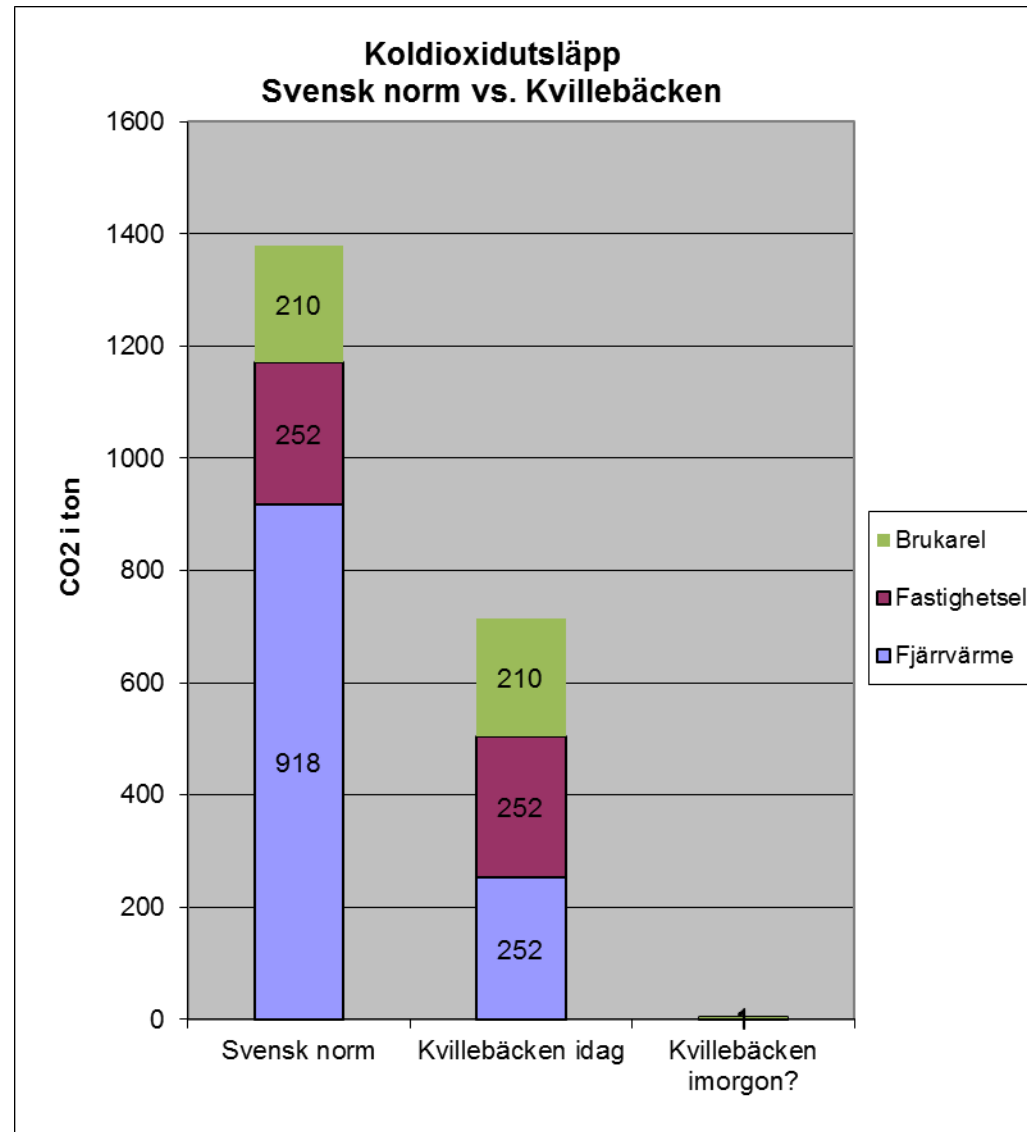
70% lower CO₂ emissions compared to Swedish standard!

And higher CO₂ emissions due to more materials and more transports are "repaid" in three years!



CO₂ emissions from 2000 dwellings in Kvillebäcken

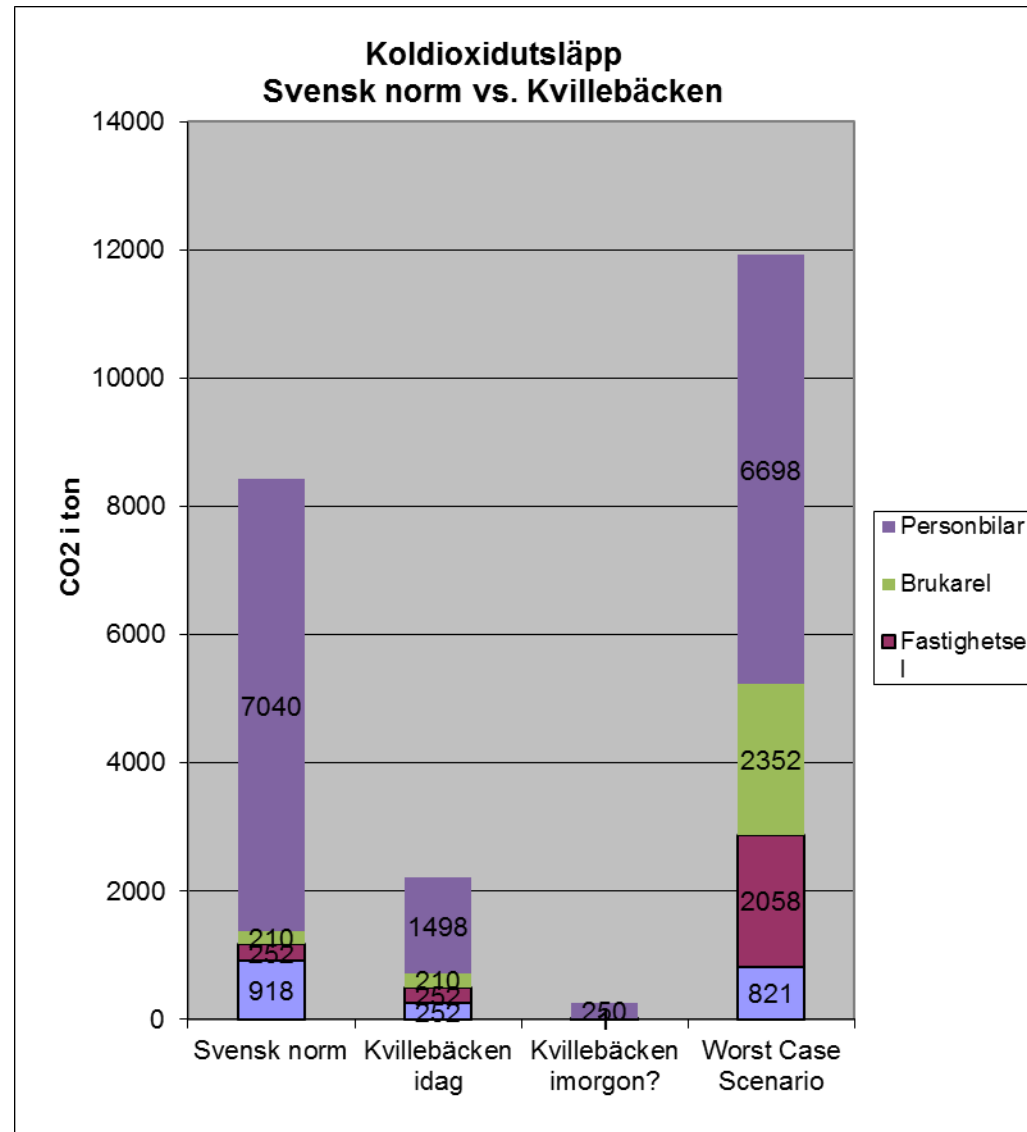
1. Swedish standard (90kWh/m², year)
2. Kvillebäcken today (60kWh/m², year)
3. Kvillebäcken tomorrow





Including cars... And a Worst Case Scenario

1. Swedish standard (90kWh/m², year)
2. Kvillebäcken today (60kWh/m², year)
3. Kvillebäcken tomorrow
4. Worst Case Scenario



Thank you!

Staffan Bolminger

031-779 96 35

staffan.bolminger@alvstranden.goteborg.s

e

@SBolminger

